

Q9

INSTRUCTION

Read user manual carefully in order to protect the user's safety
and ensure the accurate use of the product.
Contents of the manual might be modified without prior notice.

IRDAD

Made in Korea

JAEWONCNC

BEFORE USING

USER INFORMATION.....	1
PRECAUTION	2~3

PRODUCT INFORMATION

PRODUCT OVERVIEW.....	4
PACKAGE COMPONENT	5
NAME OF EACH PART	6
SPECIFICATION	7

SETUP

INSTALLATION	8~9
UNINTERRUPTED FUSE CABLE	10

USING THE DEVICE

PRODUCT FUNCTION	11
BUTTON SCENARIO GUIDE	12~13
RECORDING MODE	14
VIDEO FOLDERS IN SD MEMORY CARD	15
FIRMWARE UPDATE	16~18

DEDICATED PC VIEWER

INSTALLATION & RUNNING THE VIEWER ..	19
OVERVIEW	20
WATCHING FRONT/REAR IMAGE	21
ENLARGING THE SCREEN	22
REPEATING EVENT PLAYBAK & OSD ...	23
THUMBNAIL/DRAWING A LANE	24
BACKUP	25
SYSTEM SETTINGS	26
EVENT SETTINGS	27
ADAS SETTINGS	28
USER SETTINGS	29
PORTABLE DISK	30
VERSION INFO	31

HOW TO CONNECT

ios DEVICE	33
ANDROID DEVICE	34

APPLICATION

MAIN SCREEN/LIVE VIEW.....	35
RECORDING LIST, PLAYBACK, BACKUP ..	36
SETTINGS	37~41

TROUBLESHOOTING

	42
--	----

THANK YOU FOR CHOOSING JAEWONCNC IROAD VEHICLE RECORDER.

This manual contains how to operate product and guide you to use correctly, Please read carefully before using product.

This manual is based on IROAD Q9 model. Please be informed that there might be some unintended errors.

Contents of the manual might be modified without prior notice.

■ Guarantee and Supporting

- Please visit our official website <http://www.iroadkr.com>
- Dedicated viewer, latest firmware and other product information are available for download from the website.
- JAEWONCNC is not responsible for any problem that occurs if the device is used or obtained illegally.
- Though this product records and saves footages in the event of accident, it does not guarantee every single accident scenes are fully recorded.
- Accidents scenes may not be recorded if there is minor impact on the vehicle so that the impact sensor cannot detect.
- The recordings obtained from the product might be used as a proof of accident. However, JAEWONCNC will not be responsible for any gain or loss caused by the accident.

■ Copyrights and Trademark

- This manual is legally protected by copyrights, all copyrights reserved to JAEWONCNC.
- This manual is the property of JAEWONCNC, no one is allowed to attempt to make an unauthorized copy, edit and translate the manual.
- IROAD is the trademark of JAEWONCNC. JAEWONCNC has rights to IROAD (Name, Design, Brand image), any unauthorized property use of IROAD will result in prosecution.

2. PRECAUTION

■ Voltage Related Issues

- Please make sure to use recommended/stable voltage only. Otherwise, misusing may cause product failure and fire accidents, explosion or damage to the vehicle.
- Do not arbitrarily disassemble and modify the product. Otherwise it might cause damage of the product and electric shock. It should be considered user's fault and void the warranty.
- Make sure that the power cable is not cut or damaged when attaching other electronic gadgets on the vehicle, otherwise it can cause product failure or danger of electric shock, and please use qualified power cable which is produced by JAEWONCNC.
- It is highly recommended not to arbitrarily connect the uninterrupted power cable to vehicle as it can cause malfunction of the product by different conditions of vehicle and surrounding environments. (Please contact professional engineer if you needs to install it).

■ Installation

- Do not mount Vehicle Recorder on where sight might be disturbed. It may cause an accident.
- Connect all the cables provided into right slots. Misusing would cause malfunction.

■ The Right Use

- Do not use Vehicle Recorder while driving. Park vehicle in safe place to use it.
- Do not force a product or its lens, otherwise it may cause product malfunction.
- Keeps the device away from flammable or explosive stuff causing explosion and fire.
- Do not cover the device with fabric or other tools. Malfunction or fire would cause once it is overheated.
- The device can become hot if it has been switched on for a long period so exercise caution touching the unit.
- The quality of image could deteriorate while the car is passing through tunnel or at very dark night with no light.
- Recording quality might be reduced by excessive tint.
- Image quality could deteriorate when the temperature of the device exceeds the optimal operating temperature.

■ Management

- Turn Recorder off when exposed to direct sunlight or used for too long. Otherwise, malfunction or breakdown would occur.
- Please check whether the device is working before driving a car.
- Do not remove SD card or turn off the power cable during the firmware update. It may cause malfunction or loss of data.

■ Memory Card and Precaution

- There is the lifetime of memory card for rewriting which is expendable product.
Some errors could occur if the lifetime of memory card reached or being stayed in high temperature environment, Periodic care is required.
- The device must be turned off when ejecting memory card.
It may cause to erase data or malfunction of memory card when forcing switch-off while it is running.
- Keep memory card in case all the time when not in use, Please avoid places where is humid and very hot.
- Genuine IROAD memory card is recommended, Failure to use not a genuine one may cause error or malfunction of product.
Memory card is expendable, Memory card's warranty is 6 month period after purchase.
It may cause to reduce life cycle of memory card if using with constant power cable.
- Please format a memory card 2 times every month for its stability.
(Format function supported by a dedicated viewer is recommended)
- Product is only permitting recording files and Q9 program, any other files will be deleted in order to keep stability.
(Please use the SD card for the product only, otherwise it will be deleted.)
- It takes up to 5 minutes depending on the memory capacity to use SD card if is the first time of using it.
Please do not remove the SD card while the device is running or when it is being turned off.

4. PRODUCT OVERVIEW



High Definition Vivid Front/Rear Full HD 2CH

Front camera has Full HD 1920x1080p 30 frames
Rear camera has Full HD 1920x1080p 30 frames



Wi-Fi Support

Real time view and playback is supported via Wi-Fi.
Settings and automatic upgrade is supported.



ADAS - Advanced Drivers Assistance Systems

Lane Departure Warning System (LDWS)
Front Collision Warning System (FCWS)
Front Vehicle Departure Warning (FVDW)



SAFEGUARD for All Your Safety

Automatic low voltage cutoff function is embedded
in the device for the safety of the car battery.



Memory Card Automatic Recovery Function

In case any error occurs,
data is automatically recovered.



Night Vision

Specialized more clear and sharp recording
at night time



Variable Recording Mode

Automatic Parking Mode and Motion Detection function
Impact, 24 hours Recording Mode



High Intensity Security LED

High intensity LED makes it possible to check outside
whether product is working.
So as to prevent beforehand vehicle theft and accident.



Voice Recording & Voice Guidance

High quality Sound Recording
Clearer Voice Guidance by built-in speaker



External GPS

Driving information through external GPS
Time, driving path, direction with recorded video



Dedicated PC Viewer & Smartphone Playback

Playback recorded data,
set various functions on dedicated PC viewer.
Playback on PC and Smartphone playback available



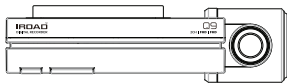
Firmware Update

Continuous improvement and performance
maintain product stability.
Easy and simple upgrade through website
www.iroadkr.com or smart directly

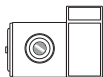
5. PACKAGE COMPONENT

Basic Components

- The picture of this package may differ from the real.
- The images of components can be different from the real and some can be changed.



Front Camera



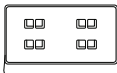
Rear Camera + Cradle



Uninterrupted Fuse Cable



User Manual



Cradle



IROAD Genuine Micro SD



Rear Camera Cable

Optional Products

- The picture of this package may differ from the real.
- The images of components can be different from the real and some can be changed.



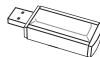
Wi-Fi Dongle



Cigar Jack Power Cable

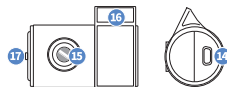
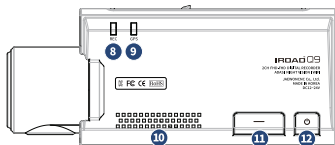
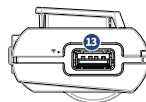
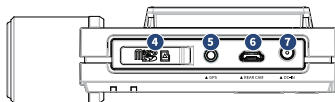
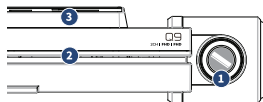


External GPS Antenna



SD Card Reader

6. NAME OF EACH PART



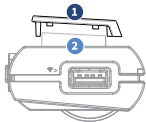
- | | | | |
|--------------------------|---------------------------------|-------------------------|---------------------------|
| 1 Camera lens | 6 Rear Camera Cable Slot (V-IN) | 11 Wi-Fi control button | 14 Rear camera cable slot |
| 2 Security LED | 7 Power Connector (DC-IN) | 12 Power button | 15 Camera lens |
| 3 Cradle | 8 REC LED | 13 Wi-Fi USB Slot | 16 Transparent cradle |
| 4 Micro SD Card Slot | 9 GPS LED | | 17 Security LED |
| 5 External GPS Connector | 10 Speaker hole | | |

7. SPECIFICATION

Model	IROAD Q9
Image Sensor	2.0Mega Pixel Image Sensor
CPU	ARM Cortex-A7 MP Core Processor V3
Resolution/Frame/Viewing Angle	Front:1920x1080 30fps, Rear:1920x1080 30fps / 142°
Wi-Fi	Wi-Fi supported – Smartphone playback/settings, Firmware automatic upgrade
Wi-Fi Button	Registration stand-by mode ON/FF, Voice recording ON/OFF
ADAS	LDWS, FCWS, FVDW
Audio Input	Embedded MIC
Video/Audio Compression	H,264 / ADPCM
Vibration Sensor	3-axis acceleration sensor (Start recording when it senses external impact)
External GPS Sensor	Google map sync, inform the location and travelling speed of the vehicle.
Storage Medium	Micro SD 16GB ~ 128GB (MLC Class10)
Recording Mode	Driving, Event(Impact), Parking(Motion detection)
Uninterrupted Power	Low voltage cut-off, overheating prevention is embedded
Power Supply / Power Consumption	DC 12V ~ 24V / 2.9W
Operating Temperature/Humidity	-30 ~ 80°C (Storage temperature : -30 ~ 90°C) / 10 ~ 95%
LED	Security LED
Viewer	IROAD Q9 Viewer : Windows Xp, VISTA, Win7, Win8, Win10 (32Bit ~ 64Bit support)
Application	IROAD App (Android 2.3, iOS 9.0 or higher version)

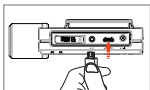
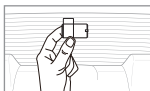
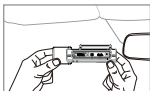
8. INSTALLATION

■ Mounting a cradle for front camera



- Fit push chase (1) from the cradle aside into hole (2) of the top of main body.

■ Product Installation



1. Use soft cloth to wipe out the spot where the product will be attached
(Wipe out with soft cloth or tissue)
2. Attach product
(Remove the protective film from the adhesive tape of front/rear camera)
3. Connect the cable of rear camera
(Connect the rear camera cable V-IN slot)

Please make sure the cable connector is very tight that should be installed and removed more carefully

■ Placing cameras



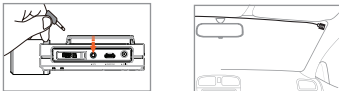
- Use dry fabric to wipe out the spot where the product will be attached on the windscreen.
- Make sure to install the product on where sight is not disturbed.

■ Product Installation



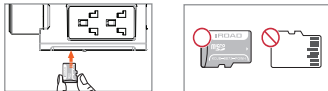
4. Connect power cable to DC-IN slot
5. Other side of cable connect to vehicle fuse or cigar jack power
In order to install uninterrupted power cable, refer to the website www.iroadkr.com or look at this instruction page 10
6. Make sure that the product is operating normally
7. Clean up the power cable and rear camera wiring with cable holder or using edge part of vehicle

■ Connect External GPS



Connect external GPS to GPS slot of the back
It provides vehicle speed,
location and other additional information
Please make sure to have some distance
between main product and GPS

■ Inserting Micro SD memory card



- Make sure to insert sd card in the right way

Push the sd card into the memory card slot until you hear clack sound.

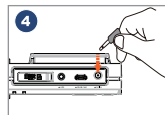
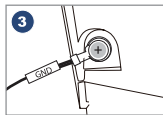
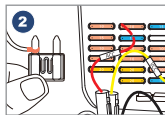
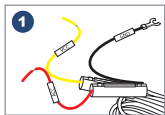
When using memory card for the first time or when the memory card is reused after format, the system will be in standby mode for 3~5 minutes to create system files and checking the memory card.

Recording starts with voice guide saying "Start recording"

■ Uninterrupted Power Function?

It prevents battery discharge beforehand while in parking mode. The uninterrupted power function ensures your battery is protected. The discharge of battery voltage will be prevented in advance for 24 hours if the battery level goes down the minimum preset level. (There might be able to occur natural battery discharge caused by the long term parking hours or each vehicle status. Please change voltage level up to high especially in winter season, refer to the instruction).

■ How to Install Uninterrupted Fuse Cable



- 1 Find right fuse using electric tester from fuse box of the vehicle.
- 2 [VCC]Line (Yellow Line) : Make sure engine's off and connect to a current flowing fuse.
[ACC]Line (Red Line) : Connect to fuse which should be electric current only when ignition on.
- 3 Connect GND line to vehicle itself which has to connect iron part of vehicle itself.
Do not connect bolt of dash board where current is not flowing.
- 4 Connect the power cable to confirm the operation of product, then neatly organize cables to finish installation work.

- Before installation must check for wire color. Sometime switch (VCC,ACC,GND) wire color.
Please refer to website www.iroadkr.com for the details of uninterrupted power installation, contact a technician for accurate installation.
- Please do switching test (Driving mode ↔ Parking mode) before wiring.

- Menu and function can be changed without prior notice by sudden firmware upgrade or product enhancement.

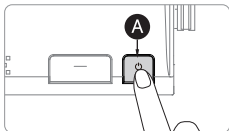
■ Product Operation

Power ON	<ul style="list-style-type: none">– All LED will be turned on when the engine is on.– Normal recording starts along with Voice Guidance.– External GPS LED will be turned off if there is no GPS connection.
Power OFF	<ul style="list-style-type: none">– All LED will be turned off when the engine is off or the constant cable is disconnected.
External GPS	<ul style="list-style-type: none">– GPS LED flickers while external GPS is connecting (GPS LED will be on constantly while connected to satellite).– Please recheck the connection if there isn't LED on despite external GPS installed.
Wi-Fi User Registration	<ul style="list-style-type: none">– There is voice guidance to switch to standby mode of "User Registration Mode" if you press Wi-Fi button.– If there is no Wi-Fi request, it will change to normal recording mode (Press the button again to switch standby mode).

12. BUTTON SCENARIO GUIDE

• Menu and function can be changed without prior notice by sudden firmware upgrade or product enhancement.

■ Button Scenario Guide1



Power OFF	<ul style="list-style-type: none">- Press and hold the button A for 5 seconds long.- “Shut down the system.” will be signaled, and the device will be powered off.
Power ON	<ul style="list-style-type: none">- Press and hold the button A for 5 seconds long.- “Start recording.” will be signaled, and the device will be powered on.
Wi-Fi OFF	<ul style="list-style-type: none">- Press the button A for 1.5 seconds long. “Ding” sound will signal.- “Wi-Fi power is off.” will be signaled, and Wi-Fi connection will be unavailable.
Wi-Fi ON	<ul style="list-style-type: none">- Press the button A for 1.5 seconds long. “Ding” sound will signal.- “Wi-Fi power is on.” will be signaled, and Wi-Fi connection will be available.

※ When 'Wi-Fi OFF', the consumption power is reduced by 0.3w and the device operating time is increased by 10%.

※ 'Wi-Fi ON/OFF' function allowing Users to turn Wi-Fi power on/off. Do not confuse it with 'Wi-Fi registration button'.
When connecting to a smartphone, you must press 'Wi-Fi Registration Button'.

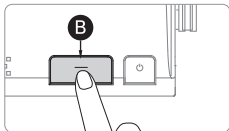
※ Smartphones that have already been registered previously, Users do not have to re-registered even if the Wi-Fi on/off function is used.

※ Default settings - Wi-Fi function is ON.

13. BUTTON SCENARIO GUIDE

• Menu and function can be changed without prior notice by sudden firmware upgrade or product enhancement.

■ Button Scenario Guide2



Wi-Fi Stand-by Mode ON	<ul style="list-style-type: none">- Press the button B shortly. "Ding-dong" sound will signal.- "Stand-by mode for the registration." will be signaled, and Wi-Fi connection can be initiated.
Wi-Fi Stand-by Mode OFF	<ul style="list-style-type: none">- Press the button B shortly. "Ding-dong" sound will signal.- "Stand-by mode for the registration is released." will be signaled, and Wi-Fi connection cannot be initiated.
Audio Recording OFF	<ul style="list-style-type: none">- Press the button B for 3 seconds long. "Ding-dong" sound will signal.- "Stop recording the voice." will be signaled, and will be recorded without audio.
Audio Recording ON	<ul style="list-style-type: none">- Press the button B for 3 seconds long. "Ding-dong" sound will signal.- "Start recording the voice." will be signaled, and will be recorded with audio.

14. RECORDING MODE

- Menu and function can be changed without prior notice by sudden firmware upgrade or product enhancement.

■ Recording Mode

Normal Recording	<ul style="list-style-type: none">– It starts recording when power is connected.– Security LED flickers once every 2 seconds.
Event Recording	<ul style="list-style-type: none">– It will be recorded for event recording mode if it detects any shock(SEC LED flickers).– It will return to Normal recording mode after finishing event recording.
Parking Recording	<ul style="list-style-type: none">– It will switch to parking mode if G sensor doesn't detect movement for 5 minutes.– It is recorded with 10 frames quality in order to extend recording time.– Security LED flickers every 1 second.– Switch to normal recording mode when the car is on the move.
Motion Detection Recording	<ul style="list-style-type: none">– It records if there is any movement within a range of 3 meters distance.– Security LED will blink faster.– If the movement finishes, it returns to parking mode again.

15. VIDEO FOLDERS IN SD MEMORY CARD

• Menu and function can be changed without prior notice by sudden firmware upgrade or product enhancement.

■ Memory Card Directory



Config



Data



Event



Update



Viewer

Config System Folder

- Log.txt : Saved device status
- System.cfg : Saved device settings
- Version.ini : Saved version information

Data Normal (Driving) Recording Folder

- Normal recordings are being saved into this folder. The number of files being saved depends on the capacity of the memory card.

Event Event(Impact) Recording Folder

- Recorded data of events (Impact, Parking, Motion) recording will be saved into this folder.

Update Firmware Folder

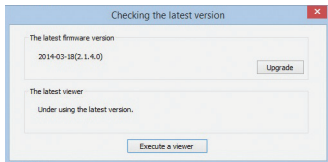
- Allow user to manually update the device firmware using the update file downloaded from our website.

Viewer Viewer Setup Program

16. FIRMWARE UPDATE

*Firmware updates for new function or product improvement will not have prior notice, please visit the website regularly for any updated information.

■ Automatic Update via PC Viewer Program

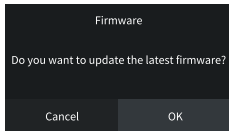


- 1 . Application will prompt an update message when the PC viewer program is being installed for the first time as shown on the picture above.
- 2 . If the user selects the upgrade button, it will automatically download the upgrade file into the memory card.
- 3 . Make sure the power cable is disconnected from the device first before inserting the memory card.
- 4 . Once the memory card is being inserted into the device, connect the power cable and start the engine.
- 5 . The device will format by itself and will prompt a message "Re-installing the program, please do not turn off the power."
- 6 . Once the device is being rebooted, this means that the update is done.

17. FIRMWARE UPDATE

- Menu and function can be changed without prior notice by sudden firmware upgrade or product enhancement.

■ Automatic Update [Wi-Fi]



[Message Pop-up]

1. Confirm the device is properly registered
2. Message Pop-up will be appeared when press the "Firmware Update" button on IROAD Application
3. Press "OK", Update will begin automatically
4. Please do not turn off smartphone and product while updating
5. once update completed, the device is rebooted and restart recording

• Firmware updates for new function or product improvement will not have prior notice, please visit the website regularly for any updated information.

■ Manual Update



Update

1. Disconnect the power cable.
2. Remove the memory card from the device and insert it into the card reader. Afterwards, insert the card reader into the PC. Once it is done, copy the downloaded firmware file into the memory card under the folder named "Update".
3. Insert the memory card back into the device.
4. Connect the power cable back into the device (DC-IN) port.
5. Turn on the engine. Make sure the engine is on.
6. The device will update and format by itself and the LED light will start to flicker. It will then prompt a message "Re-installing the program, please do not turn off the power."
7. Once the update is done, the device will reboot and starts recording.

19. INSTALLATION & RUNNING THE VIEWER

Firmware updates for new function or product improvement will not have prior notice, please visit the website regularly for any updated information.

Program Installation

1. The viewer software is not pre-setup in the memory card.
2. Connect power to the product after inserting Micro SD card. Recording time could differ depending on the capacity of SD card.
3. Take 3~5 minutes to initialize and create the file system when first use.

(All LED flicker while initializing, There will be REC on when it starts recording after finishing) Insert the SD card into PC.

4. Run viewer.exe which is saved in the memory card.



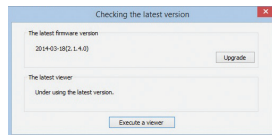
viewer.exe


Running the Program

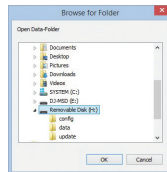
1. Confirmation pop-up window appears if there is internet connection as picture shown.

If there is no internet connection, IROAD VIEWER will run directly.

2. Press "run a viewer" icon to start viewer program.



3. Open File - Click the icon  in the viewer to browse folder window as shown in the picture. Select removable disk, press "OK" button.

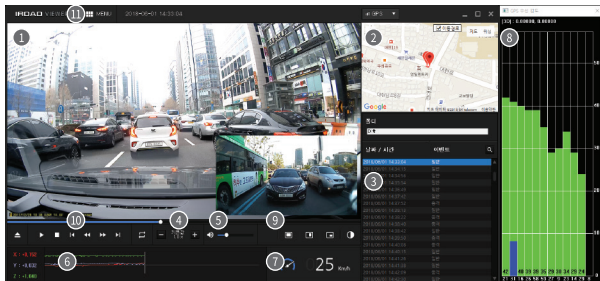


20. DEDICATED PC VIEWER

IFROAD Q9
QUALIFIED VIDEO RECORDER OF VEHICLES

* Firmware updates for new function or product improvement will not have prior notice, please visit the website regularly for any updated information.

Overview



1 Front/rear image playback screen

2 Google Map
(Only when connected with external GPS)

3 Recording File List

4 Adjust playback speed

5 Volume Control

6 G-Sensor(Acceleration) Graph

7 Speed indicator
(Only when connected with external GPS)

8 GPS signal receiving window
(Only when connected with external GPS)

9 Front/rear image related

	Front/Rear image switch
	Cutting Front/Rear image in half
	Front/rear image PIP
	Color/Black&white mode switch

10 Playback Recording

	Open
	Play, Stop
	Repeat event
	Step Reverse, Step
	Previous/Next event

11 Menu

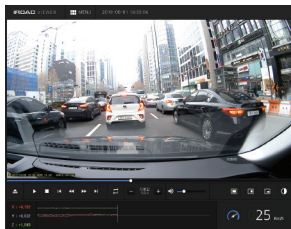
	Thumbnail		Backup
	Drawing a lane		Setup
	Print		

21. DEDICATED PC VIEWER

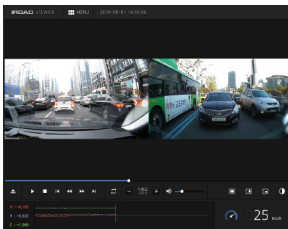
IFROAD Q9
QUALIFIED VIDEO RECORDER OF VEHICLES

* Firmware updates for new function or product improvement will not have prior notice, please visit the website regularly for any updated information.

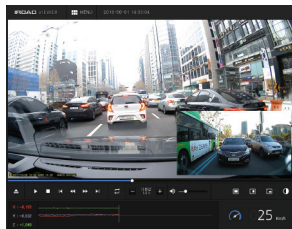
■ Watching Front/Rear Image



Click the icon to watch front/rear image



Click the icon to watch both front/rear in half



Click the icon to watch front/rear PIP

22. DEDICATED PC VIEWER

• Firmware updates for new function or product improvement will not have prior notice, please visit the website regularly for any updated information.

■ Enlarging a Screen



Double left click (mouse) on the main menu screen to expand to full screen.

Click the left button (mouse) to return to previous screen again.

■ Partial Enlargement of a Screen



Magnifier will appear, when right click (mouse) in playback screen. You can move the enlarged screen by holding the left button (mouse) and drag the screen to view other area of the recording.


The Magnifier will disappear if click the right button (mouse).

23. DEDICATED PC VIEWER

* Firmware updates for new function or product improvement will not have prior notice, please visit the website regularly for any updated information.

Repeating Event Playback



- Click "repeat event" icon  to activate repeat function from the main viewer screen. Section bar is activated.
- Select start and end point to playback repeatedly.
- This function is only available in a playback section.

OSD



- The information of speed, date and time are displayed in the lower left section of the viewer during playback.
- The date and time notation is applied to all backup files.



 2018/06/01 02:33:04PM 16.4V 25km Unknown

24. DEDICATED PC VIEWER

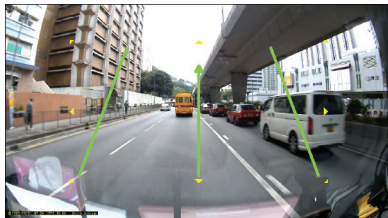
* Firmware updates for new function or product improvement will not have prior notice, please visit the website regularly for any updated information.


■ Thumbnail



- Switch to thumbnail function if click the icon  in the main viewer screen.
- This screen is composed of 16 pictures in total and each of the screen shows one scene.
- It show enlarged full screen if double-click the specific each of scene.
- Playback, Play backwards also show 1 to 16 pictures sequentially.
- Return back to normal mode if click the icon  again.

■ Drawing a Lane

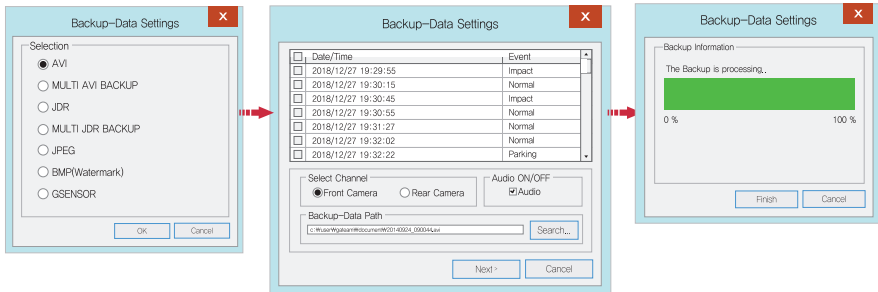



- Click to the icon  to "Drawing a lane" mode.
- User can apply the lane manually.
- Click the icon and choose 'deactivating lane drawing to deactivate it.

25. DEDICATED PC VIEWER

* Firmware updates for new function or product improvement will not have prior notice, please visit the website regularly for any updated information.

Backup

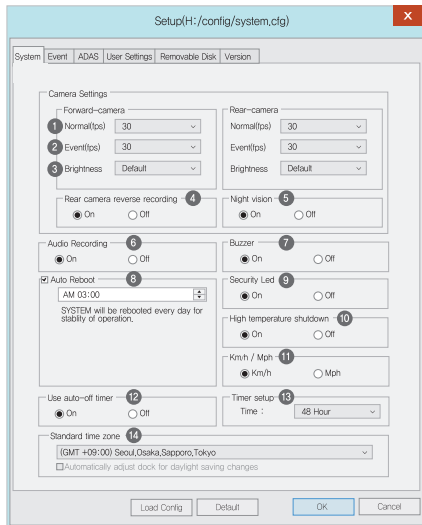


- Click the “Backup” icon  in main screen menu.
- Backup settings provides a various type of video recording downloads such as AVI, Multi AVI, JDR, Multi JDR, JPEG, BMP and G sensor formats.
- AVI format file can be played on Windows Media Player or other Third-party Player as long as the player able to support the file format.
- JDR format file can be played back with dedicated IROAD viewer only.
- Images file can be opened with Image viewer or other image application.
- To download multi recording for AVI, selected the recording user wish to download by the time and date.
- Download will begin after selecting a download folder/path follow with the next button.
- AVI backup is available to use tamper-resistant function.
- User will be able to select download with audio or without by checking or unchecking the Audio Save button.

26. DEDICATED PC VIEWER

* Firmware updates for new function or product improvement will not have prior notice, please visit the website regularly for any updated information.

System Settings

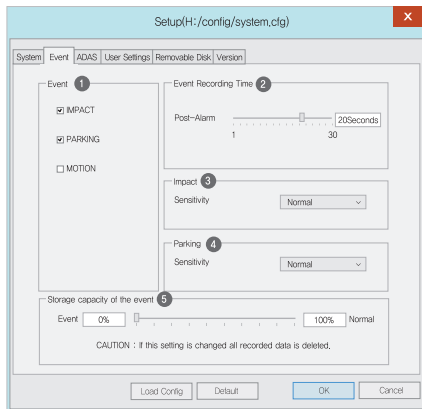


- 1 Normal(FPS) – Setting for Frame Per Second for normal recording.
- 2 Event(FPS) - Setting for Frame Per Second during event recording.
- 3 Brightness - Adjust the brightness of recording
There are 3 setting for brightness, Darkness / Default / Bright
- 4 Reverse (Rear) – Save with reversed image
- 5 Night Vision – ON / OFF is available
- 6 Audio Recording - Enable/Disable audio when recording
- 7 Buzzer - Alarm will sound when event have occur (Available to ON/OFF)
- 8 Auto Reboot - Auto Reboot - Reboot the device at the pre-set time so that the system will do a check on the memory card and also the device system.
- 9 Security LED - Select on/off (Only for front camera)
- 10 High Temperature Shutdown
- When the temperature limit is reached(75 °C) in parking mode, the power is cut off to protect the product.
- 11 Speed Meter Display - Change distance notation, KM or Miles
- 12 Use Auto-Off Timer – After entering the parking mode, the power is cut off by setting timer.
- 13 Timer Setup – Auto-Off timer setting
- 14 Standard Time Zone - Select exact time zone

27. DEDICATED PC VIEWER

• Firmware updates for new function or product improvement will not have prior notice, please visit the website regularly for any updated information.

■ Event Settings

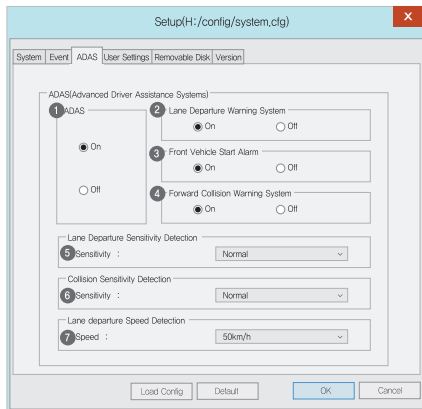


- 1 Event - Activate/Deactivate Impact/Parking/Motion function
- 2 Event Recording Time
- Recording after an event: Able to set the recording after an event happen.
(Available between 1-30 seconds)
- 3 Impact - Set the sensitivity for impact. (G-Sensor)
- 4 Parking - Set the sensitivity during parking mode. (G-Sensor)
- 5 Event Storage Capacity - Set the capacity storage for Event folder and Normal folder.

28. DEDICATED PC VIEWER SETTING

* Firmware updates for new function or product improvement will not have prior notice, please visit the website regularly for any updated information.

■ ADAS Settings



- 1 ADAS : On / Off
- 2 LDWS : On / Off
- 3 FVDW : On / Off
- 4 FCWS : On / Off
- 5 Sensitivity of LDWS : Low / Normal / High
- 6 Sensitivity of FCWS : Low / Normal / High
- 7 Speed of Land Departure : 50, 60, 70km/h

29. DEDICATED PC VIEWER SETTING

* Firmware updates for new function or product improvement will not have prior notice, please visit the website regularly for any updated information.

User Settings

Setup(H:/config/system.ctg)

System Event ADAS **User Settings** Removable Disk Version

Vehicle Info

Vehicle info 1

Driver Info 2

License plate No 3

User Info 4

User ID admin

Password

LBP 5

Auto Power Off

11.3V/23.3V 11.5V/23.5V 11.8V/23.8V 12.0V/24.0V 12.3V/24.3V

Winter LBP On Off

Time set 6

2018-09-24 PM 03:18

Load Config Default OK Cancel

1 Vehicle Info - Save vehicle information

2 Driver Info - Save drivers information

3 Serial Info - Enter product serial number

4 User Info

- No one can check the information if set password here.

- User ID - Enter login ID (Default: admin)

- Password - Set password for login (Default-None)

5 LBP (Low Voltage Cut-Off function)

Prevent car battery from discharging.

(Adjust the optimal voltage for the safety of your car)

6 Time setting

Set the exact time if not connected to an external GPS.

Set the time few minutes ahead considering travelling distance between PC and your car.

Allow user to manually set the date and time for the device.

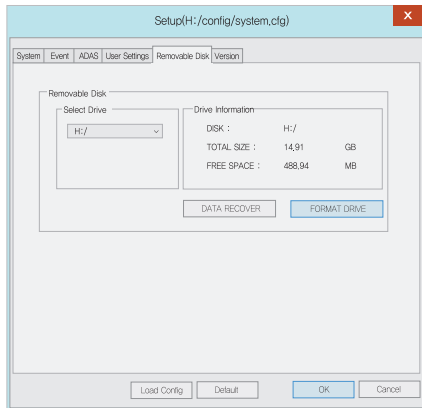
※ This is a personal information tab. Please prevent the information from leaking.

Be aware that user will not be able to view the recording if user fail to login when the password is forgotten. (SD card lock)

30. DEDICATED PC VIEWER SETTING

Firmware updates for new function or product improvement will not have prior notice, please visit the website regularly for any updated information.

Portable Disk



This function is for formatting or recovering data from the memory card when there is an error or problem. Please do back up your data. Otherwise, the data will be lost once reformatted.

- Select the right drive for SD memory card
- Select the function
- All of data will be deleted if format the drive

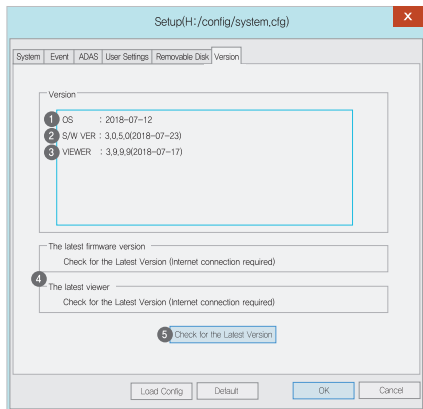
The performance of the memory card could be affected when used for too long. Proper management of memory card is important.

Please format or check the memory card once or twice every month in order to keep the stable recording condition and long usage of memory card.

31. DEDICATED PC VIEWER SETTING

• Firmware updates for new function or product improvement will not have prior notice, please visit the website regularly for any updated information.

■ Version Info



- 1 OS - Display OS information of product
- 2 S/W VER - Display Software information
- 3 VIEWER - Display viewer version information
- 4 Latest Firmware / Viewer
- 5 Click "Check for the latest version" to confirm the latest program version for the product.

- Make sure the internet is connected before firmware upgrade.

- If downloaded the firmware without SD card, Please copy the firmware file to "Update" folder directly.

32. Wi-Fi CONNECT

- Menu and function can be changed without prior notice by sudden firmware upgrade or product enhancement.

■ IROAD Smart Manager

- Available on Android and iOS device
- Please search "IROAD" on Google play store or Apple App store



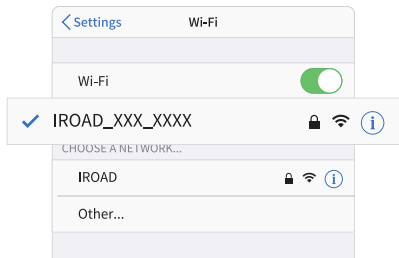
■ Before use

- Live view and playback via Wi-Fi connection will be able to delay depending on smartphone condition or specification
- Do not handle the product while driving, it causes serious accident
- USB Wi-Fi Dongle is optional purchasing and expendable item
- Press Wi-Fi button or icon on the device if there is voice guidance ("Registration standby mode")
Please confirm the Wi-Fi reception signal is strong enough or check Wi-Fi advanced option of smartphone which has to be being connected stably while update. (e.g "smart network switch" has to be off)
- There will be able to Wi-Fi drop out depending on surroundings
- Wi-Fi connect inside of vehicle is recommended for connection stability
- Saving frames of each may differ while Wi-Fi connected, Automatically recover once disconnected

33. HOW TO CONNECT

• Menu and function can be changed without prior notice by sudden firmware upgrade or product enhancement.

■ iOS Device

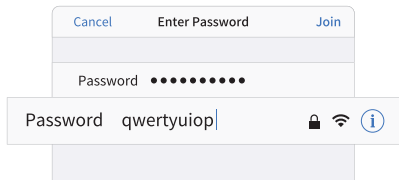


1. Turn on Wi-Fi

2. Select **IROAD_XXX_XXX** in the list

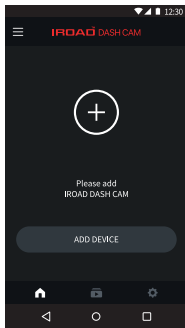
3. Write the password [qwertyuiop] and Join
(Password is all letters of second row of the keyboard)

4. Press the Wi-Fi registration button of the product to activate
"Registration standby mode"



- Menu and function can be changed without prior notice by sudden firmware upgrade or product enhancement.

■ ANDROID Device



STEP 1

Register the product when first run the application

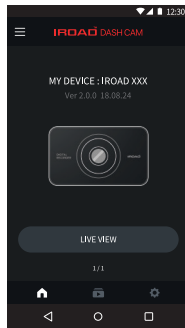
- Press the Wi-Fi registration button of the product to activate "Registration standby mode"



STEP 2

Smartphone is searching close located product with priority

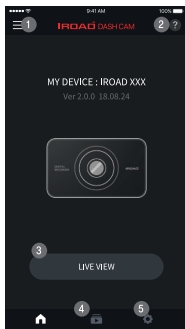
- The image, SSID and model are displayed
- Registration is completed when press the product image



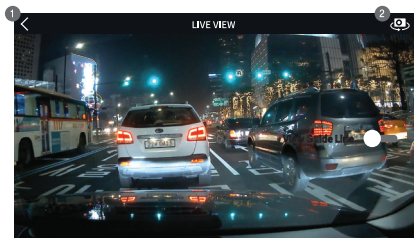
35. MAIN SCREEN / LIVE VIEW

- Menu and function can be changed without prior notice by sudden firmware upgrade or product enhancement.

■ Main Screen and Live View



- 1 Menu - Live View, Recording files, Setting, Firmware Update, Help
- 2 Help - Description of smartphone connection
- 3 Live View (horizontal view)
- 4 Shortcut icon for playback
- 5 Shortcut icon for product setting
-Once any changes are detected, setting will be changed and rebooting



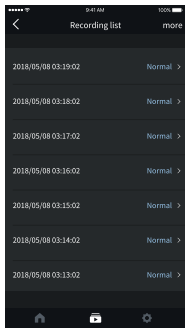
LIVE VIEW [FRONT, REAR]

- 1 Back button to the Main Menu
- 2 Switch to front view and rear view

36. RECORDING LIST, PLAYBACK, BACKUP

• Menu and function can be changed without prior notice by sudden firmware upgrade or product enhancement.

■ Recording List, Playback and Backup

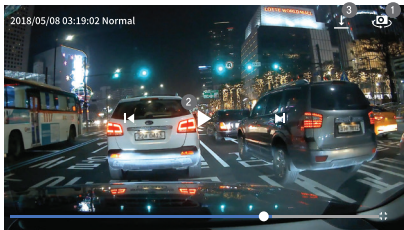


RECORDING LIST

Playback shortcut, display recording list (Normal, Event)

The latest recording is displayed at the top

Playback recording, press the "more" button to check older recordings

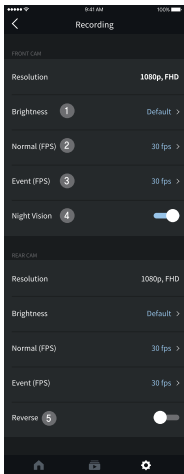


PLAYBACK RECORDING AND BACKUP

- 1 Switches to front or rear view of the footage
- 2 Video control - Previous / Play & Pause / Next
- 3 Backup button, move to backup menu
Choose file type and backup (Image/Video)

- Menu and function can be changed without prior notice by sudden firmware upgrade or product enhancement.

■ Settings - Recording

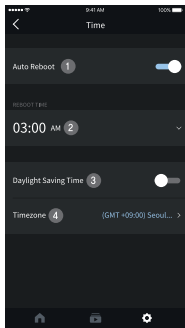


CAMERA SETTINGS

- 1 Brightness
- 2 Driving mode frame
- 3 Event (Impact, Parking, Movement) recording frame
- 4 Night Vision ON/OFF
- 5 Rear Camera Reverse View ON/OFF

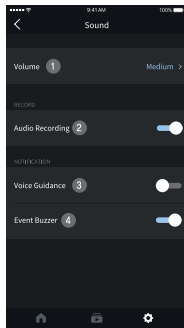
- Menu and function can be changed without prior notice by sudden firmware upgrade or product enhancement.

■ Settings - Time, Sound



TIME SETTINGS

- 1 Auto reboot ON/OFF
- 2 Auto reboot time
- 3 Daylight saving time ON/OFF
- 4 Timezone setting

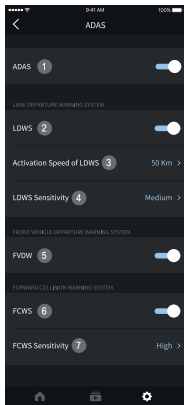


SOUND SETTINGS

- 1 Speaker volume [3 Steps]
- 2 Audio recording ON/OFF
- 3 Voice guidance ON/OFF
- 4 Event Buzzer ON/OFF

- Menu and function can be changed without prior notice by sudden firmware upgrade or product enhancement.

■ Settings - ADAS



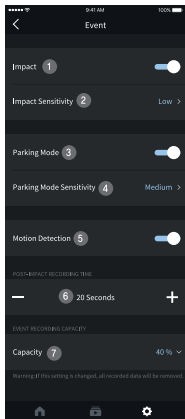
ADAS SETTINGS

- 1 ADAS ON/OFF
- 2 Lane departure warning ON/OFF
- 3 LDWS activation speed (50-70/km)
- 4 LDWS Sensitivity
- 5 Front vehicle departure warning ON/OFF
- 6 FCWS ON/OFF
- 7 FCWS Sensitivity

※ ADAS configuration change is available only when there is GPS connection, otherwise it won't be applied

- Menu and function can be changed without prior notice by sudden firmware upgrade or product enhancement.

■ Settings - Event

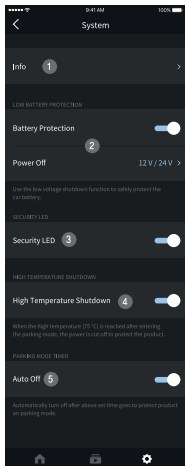


EVENT SETTINGS

- 1 Impact detection ON/OFF
- 2 Impact sensitivity
- 3 Parking Mode ON/OFF
- 4 Parking Mode Sensitivity
- 5 Motion detection ON/OFF
- 6 Post-Impact recording time
- 7 Memory allocation setting
 - Allocate memory capacity between event and normal recording storage folder.
 - Once the percentage changed, device is rebooted after format

- Menu and function can be changed without prior notice by sudden firmware upgrade or product enhancement.

■ Settings – System



SYSTEM SETTING

- 1 Info - Product information
(Driver, Car, Firmware version, Model etc..)
- 2 Low Battery Protection
 - Product will be shutdown once battery voltage reaches preset level
 - This function is important for using parking mode in order to prevent battery discharge
- 3 Security LED On / Off
- 4 Shutdown in high temperature ON/OFF
 - Cutoff the power automatically once temperature is reached 75°C while parking mode to protect product and vehicle
- 5 Parking Mode Timer
 - Product will be shutdown automatically after preset parking time

■ Device unable to power up due to cable issue

1. Check if the fuse cable is connected to the correct fuse.
2. Only use authentic fuse cable for IROAD device.
3. When using cigar jack to power up the device, the device will be turned off when the engine is off.
4. Recommended by connecting fuse cable in order to access parking mode.

■ Device keep restarting due to memory card issue

1. Make sure the device is power off before inserting the memory card into the device.
2. If the device prompts any error message regarding the memory card, try reformatting the memory card and insert back to the device and test again.
3. User is required to insert the memory card into the memory card reader before inserting into the PC.
4. Make sure to check whether the memory card reader is faulty

■ The quality of recorded video is not clear

1. Check if there is any dust or dirt on front and rear camera lenses.
2. If windscreen is tinted, it may affect video quality.
3. Surrounding light may affect the video quality

■ No power after parking. (LBP)

1. Power will be cut-off to safe guard the car battery when the voltage reaches the pre-set voltage.
2. Battery discharging period might get shorten due to the battery condition / the motion recordings recorded.

■ Unable to view playback recording

1. Recording can be playback using IROAD PC viewer and IROAD App on smart phone.
2. 3rd party players may not fully support the recording video format.
3. If error occurs during recording, contact IROAD After-sale Service for further enquiries.

IROAD™ Q9